

PART NO. SEE CHART
 DWG. NO. SDA-90567

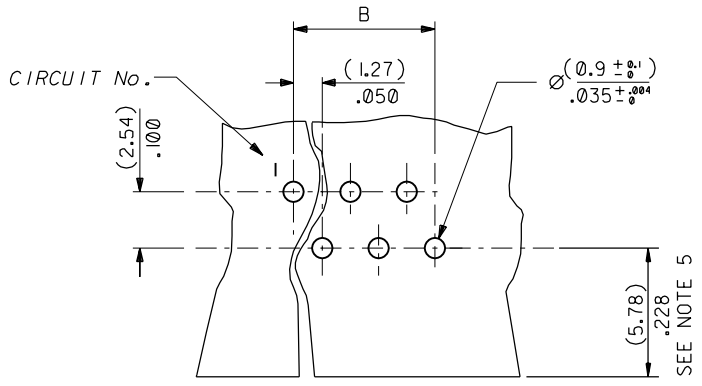
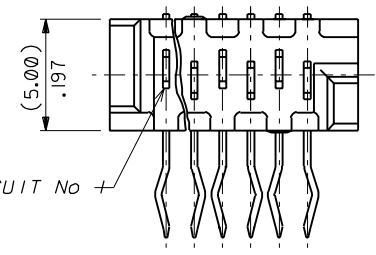
90567-0026	26	(36.80)/1.449	(31.75)/ 1.25
-0020	20	(29.18)/1.149	(24.13)/ .950
-0018	18	(26.64)/1.049	(21.59)/ .850
-0016	16	(24.10)/ .949	(19.05)/ .750
-0014	14	(21.56)/ .849	(16.51)/ .650
-0012	12	(19.02)/ .749	(13.97)/ .550
-0010	10	(16.48)/ .649	(11.43)/ .450
-0008	8	(13.94)/ .549	(8.89)/ .350
-0006	6	(11.40)/ .449	(6.35)/ .250
90567-0004	4	(8.86)/ .349	(3.81)/ .150
PART NO.	NO. OF CKTS	DIMN. A	DIMN. B

WAFER

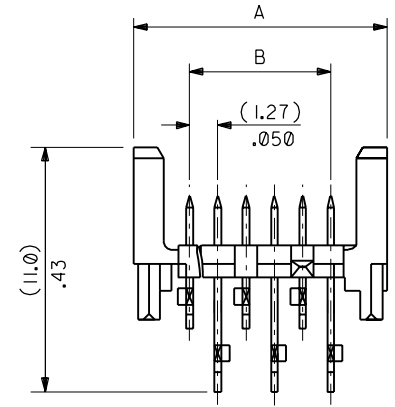
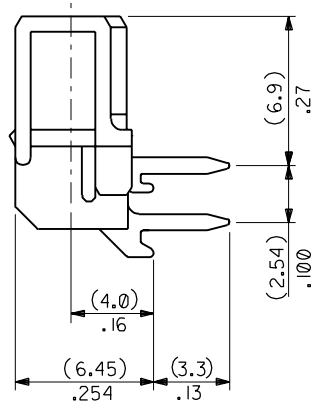
MATL: POLYESTER 7.5%
 GLASS FILLED 94 V-0.
 COLOUR BLACK

TAB

MATL: BRASS (0.30)/.012 THK.
 PLATING: 5um TIN
 OVER 2,5um NICKEL.



P.C.B LAYOUT
 SEEN FROM UNDERSIDE



NOTES:

1. APPL. CLASS TO DIN 40040 HME (-25°C/+100°C/<75%)
2. TEST VOLTAGE: 750 V.A.C./1 MIN, RATED AT 1.2A/CONTACT.
3. CONTACT RETENTION IN HOUSING IS > 7N.
4. ALL DIMENSIONS ARE FOR REFERENCE USE ONLY.
5. RECOMMENDED MAXIMUM DIMENSION FROM BOARD EDGE TO CENTRE-LINE OF FIRST ROW.

FOR PREVIOUS DRAWING ISSUES SEE MRI.

KINKED ALL TAILS
 ECN E50303
 95.02.14 HL

DIMENSIONS SHOWN (METRIC) INCH	
UNLESS OTHERWISE SPECIFIED TOLERANCES: ANGULAR ± 1/2°	
INCH	(METRIC)
3 PLACE ± .008	
2 PLACE ± .008	± .20
1 PLACE	± .20
DRAFT WHERE APPLICABLE MUST REMAIN WITHIN DIMENSIONS	
DESIGN DIMENSION (PRIMARY)	<input checked="" type="checkbox"/> (MM) <input type="checkbox"/> IN.
EQUIVALENT DIMENSION (SECONDARY)	<input type="checkbox"/> (MM) <input checked="" type="checkbox"/> IN.

DRWG BY PR
 CHK'D BY
 APP'D BY
 SCALE 5 : 1

REVISE ONLY ON CAD SYSTEM		SHL	REV.
CAD/CAM FILENAME SA90567X1 DCN	THIS DRAWING CONTAINS INFORMATION THAT IS PROPRIETARY TO MOLEX INC. & SHOULD NOT BE USED WITHOUT WRITTEN PERMISSION		
TITLE RIGHT ANGLE STAGGERED PIN HEADER ASSEMBLY (1.27)/.050 CENTRES			
molex MOLEX EUROPE		SHEET NO. DATE 10F 15/3 /89	
PART NO. SEE CHART	DWG NO. SDA-90567	SIZE B	